



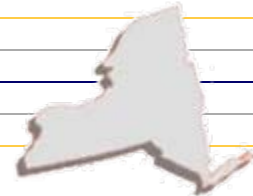
Data Transfer System Update

AIRPO Winter Conference

January 8, 2009

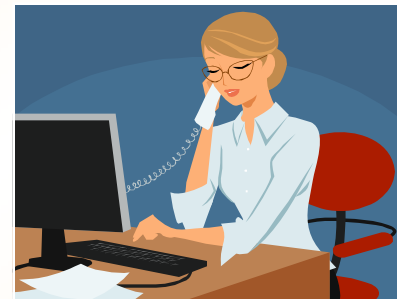
Helen Ernst





Test Environment

- Available
 - Course Submission
 - Term/Section Submission
 - Student Submission
- In Development
 - Degree (data dictionary will be available in February 2009)





Great Job

Buffalo University

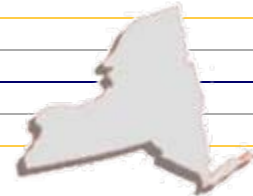
Oswego

Finger Lakes

Rockland

Schenectady

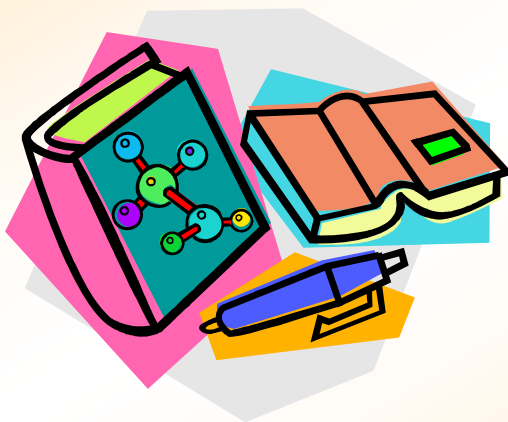
These campuses have provided all 3
submissions in the test environment



Course – Test Environment

73% (47 campuses) have sent a course submission

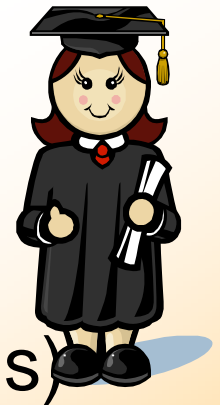
44% (28 campuses) have a locked and approved course submission





Student – Test Environment

20% (13 Campuses) have sent a student submission



6 Campuses (New Banner Implementations) must send a student submission with Fall 2008 data, all have open test submissions.

Binghamton

Cayuga

Dutchess

Jefferson

Nassau

Suffolk



Term/Section – Test Environment

25% (16 Campuses) have sent a
term/section submission





Production Environment

- Course Submission
 - 69% (44 campuses) have sent a course submission
- Term/Section Submission
 - Finger Lakes sent on 10/14 – open status
- Student Submission
 - available





All Phases – Spring 2009

Based on the DTS schedule, all campuses should be sending production data via DTS for course, student & term/section

If you are unable to send Spring 2009 submissions using production DTS please speak with your IR contact, keep them up to date on your implementation progress.



Questions

